

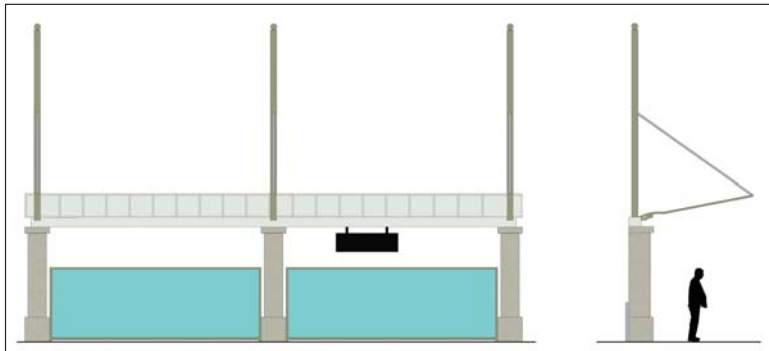
Station Design – Architectural Style

Two different styles have been identified for the East Corridor stations; Industrial Loft – Airport and Town Center Contemporary – Airport. These station styles were developed through a series of meetings with the local jurisdictions and the Transit Working Group. Both station styles are proposed to have roofing material similar to the DIA terminal to create a unified look for the corridor.

The architectural style of each station is listed below.

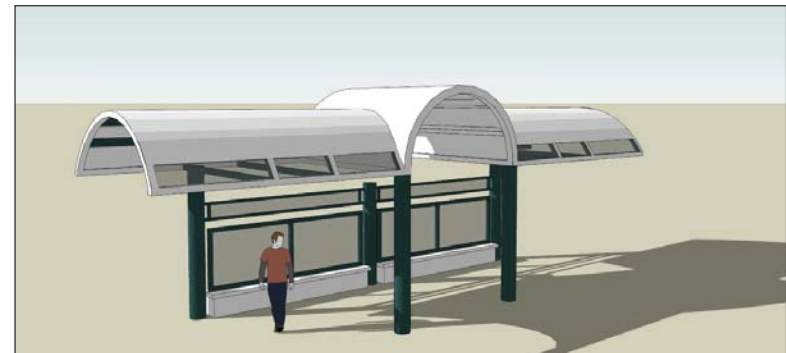
Industrial Loft – Airport

38th/Blake, Colorado, and Central Park Boulevard stations



Town Center Contemporary - Airport

Peoria and 40th/Airport stations



The basic amenities to be included at all commuter rail stations are:

Platform areas

- Lighting
- Benches
- Stairs, ramps, and railings
- Trash receptacles
- Signage
- Windscreens
- Paving

Non Platform areas

- Lighting
- Ticket machines
- Fencing
- Railing
- Bus Shelters
- Trash receptacles
- Benches
- Bike racks and storage lockers
- Transit art (by others)
- Newspaper vending boxes
- Landscaping