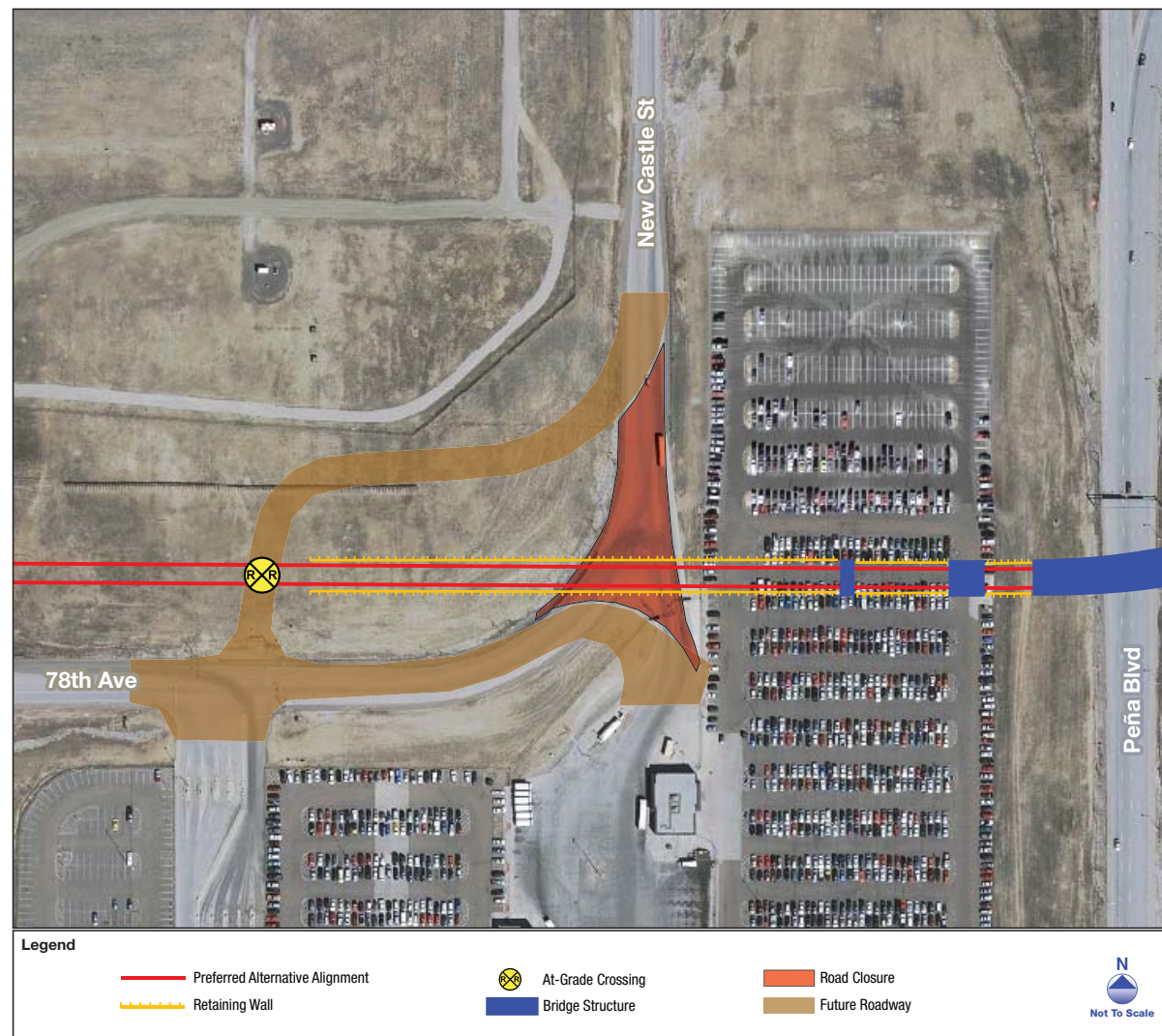


New Castle Street Design Options

The East Corridor crosses New Castle Street near DIA. The traffic analysis completed for the EIS determined that the traffic impacts from the East Corridor can be mitigated without a grade separation of this crossing. A design option was developed to grade separate the crossing in response to CCD, DIA and Public Utilities Commission comments on the DEIS.

Design Option 1

This design option would have the commuter rail crossing New Castle Street at grade. Realignment of the roadway would be necessary to maintain an at-grade crossing at this location. An at-grade crossing of the existing New Castle alignment would not be possible as the commuter rail is elevated to go over Peña Boulevard at this location. Potential benefits and impacts of this design option are in the DEIS and the FEIS.



Design Option 2 (FEIS Preferred Alternative)

This design option would lower New Castle Street in its existing alignment to allow the commuter rail crossing to be grade separated over the roadway. This design option is included in the Preferred Alternative to better address emergency response and safety at the airport.

