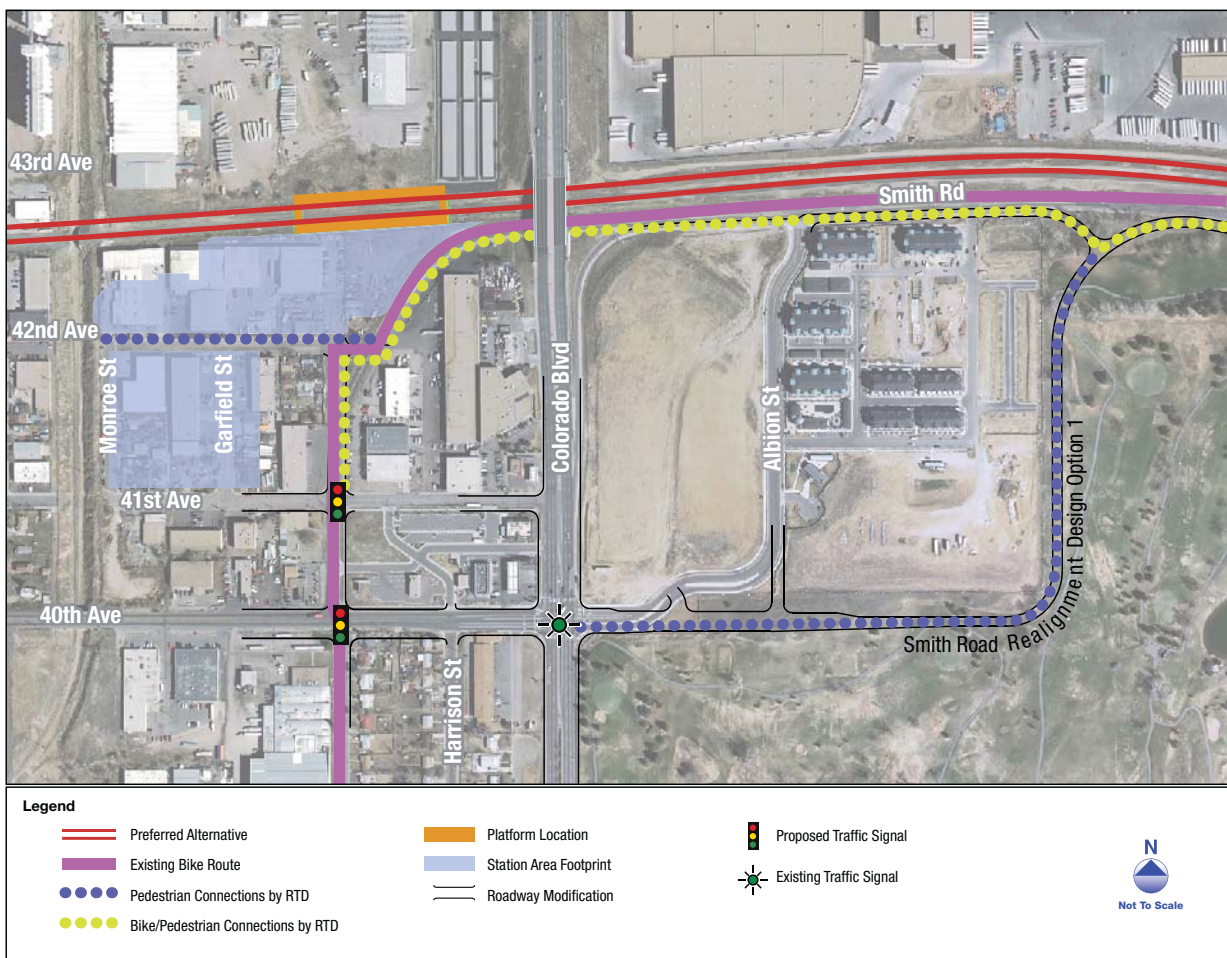


Colorado Station

Refined Access Design Option 1

RTD would provide pedestrian walkways and bike connections at key locations near the station including:

- Jackson Street from 41st Avenue to the station
- 42nd Avenue from Monroe Street to Jackson Street
- Smith Road from the station to the relocated Smith Road
- Relocated Smith Road
- Access throughout the park-n-Ride



Additional off-site connections required to enhance the connectivity from the adjacent community and existing pedestrian network to the station are identified in the FEIS. These enhanced connections such as pedestrian bridges over railroad tracks at 42nd Avenue and the East Corridor would be implemented by the local jurisdiction or other parties. RTD will continue to coordinate with local jurisdictions regarding non-project related improvements.