

Historic Resources

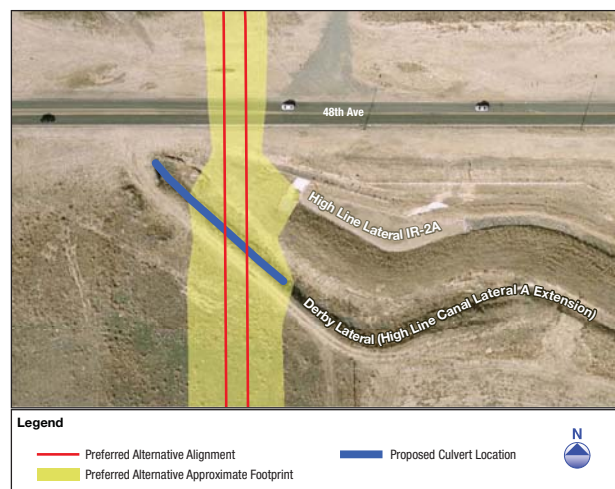
Why is this important?

Historic resources are architectural and engineering features such as buildings, canals, bridges, roads, railroads, and other structures of historic or aesthetic significance. Historic resources generally must be more than 50 years old to be considered for protection under historic resource laws.

A project is considered to adversely affect a historic resource if it alters the characteristics that qualify the resource for inclusion in the National Register* in a manner that would diminish the integrity of the resource. Integrity is the ability of a resource to convey its significance, based on location, design, setting, materials, workmanship, feeling, and association. Three resources would be adversely affected by the Preferred Alternative.

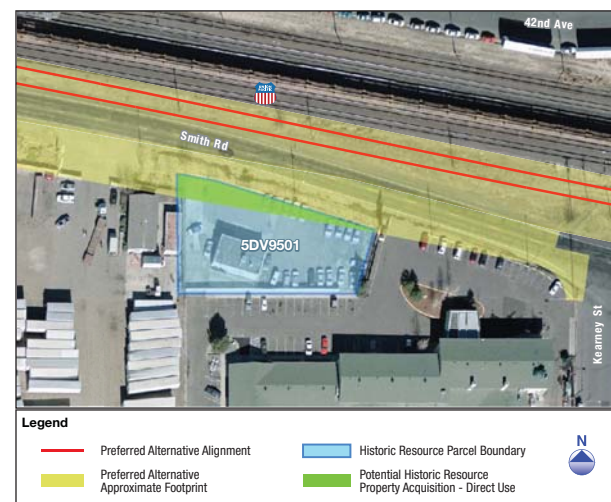
Potential Impacts

Three historic resources would have direct impacts due to resource modification or ROW acquisition and are adversely affected.



**High Line Canal Lateral A Extension/Segment
“The Derby Lateral” (5DV840.13)**

The Preferred Alternative would adversely affect 0.23 acres of the Derby Lateral where the mainline crosses the canal on the east side of Peña Boulevard. The canal would likely be diverted underground through a culvert at this location, which is an adverse effect to this resource.



35th and Blake St. LLC.(5DV9309)

The Preferred Alternative alignment would cross through the northern edge into the parking area of the property as it approaches the 38th/Blake station. The Preferred Alternative would require a potential partial acquisition of approximately 0.22 acres of the property, resulting in an adverse effect.



Freedom Cab Company (5DV9501)

Roadway improvements associated with the Preferred Alternative would shift the existing alignment of Smith Road south onto the north edge of the parking area of the resource property. The roadway improvements would require a potential partial acquisition of approximately 0.08 acres from the property, resulting in an adverse effect.

Proposed Mitigation

Mitigation measures are to be developed in consultation with State Historic Preservation Office (SHPO) and formalized in a memorandum of agreement.

*The National Register of Historic Places is the official list of properties recognized for their significance in American History, architecture, archeology, engineering, and culture. In order to be considered historic property, it must either be already listed in the National Register or be eligible for listing.